

SIMALFA®

WATER BORNE ADHESIVES



TABLE OF CONTENTS

PARTS DESCRIPTION
+ PRICING

1

CLEANING + MAINTAINING

2

TROUBLE SHOOTING

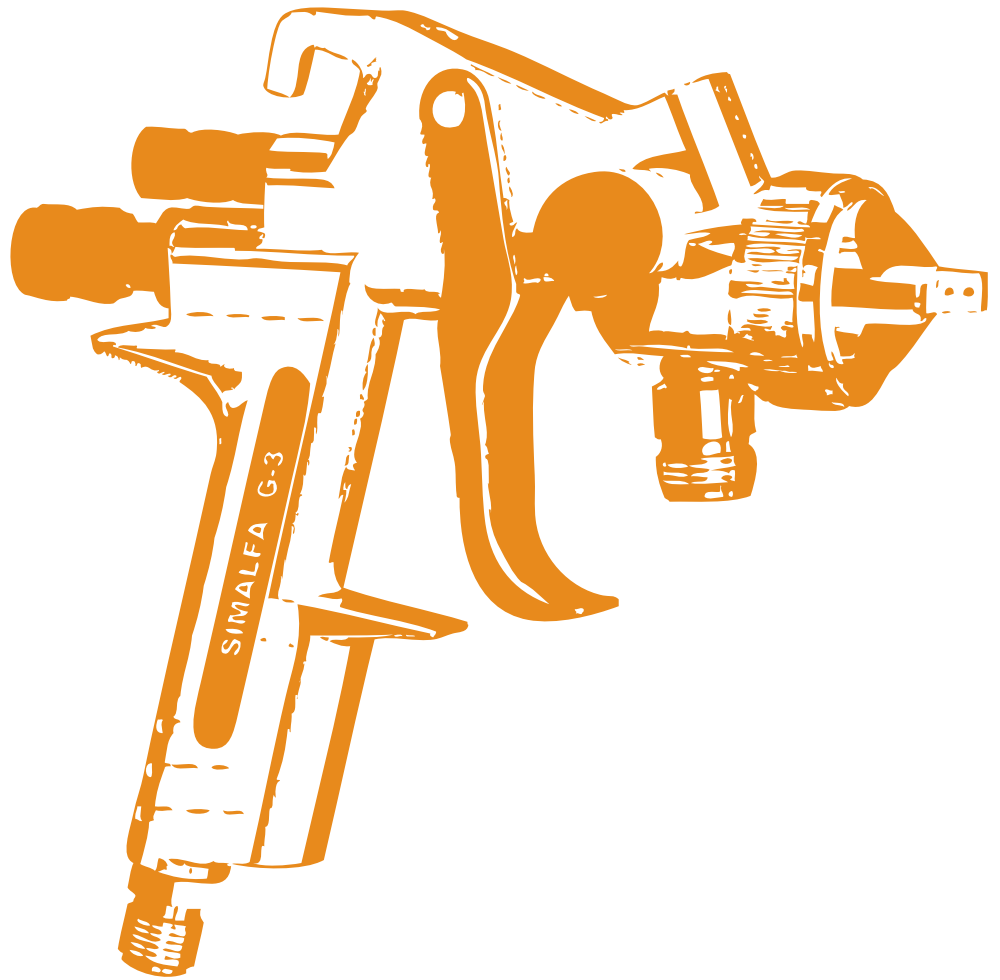
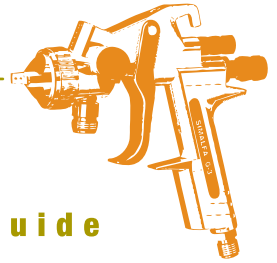
3

ACCESSORIES

4

G3 HVLP

spray gun guide



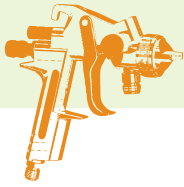
SIMALFA | THINK GREENER | SAVE THE PLANET

15 Lincoln Street Hawthorne, NJ 07506 USA

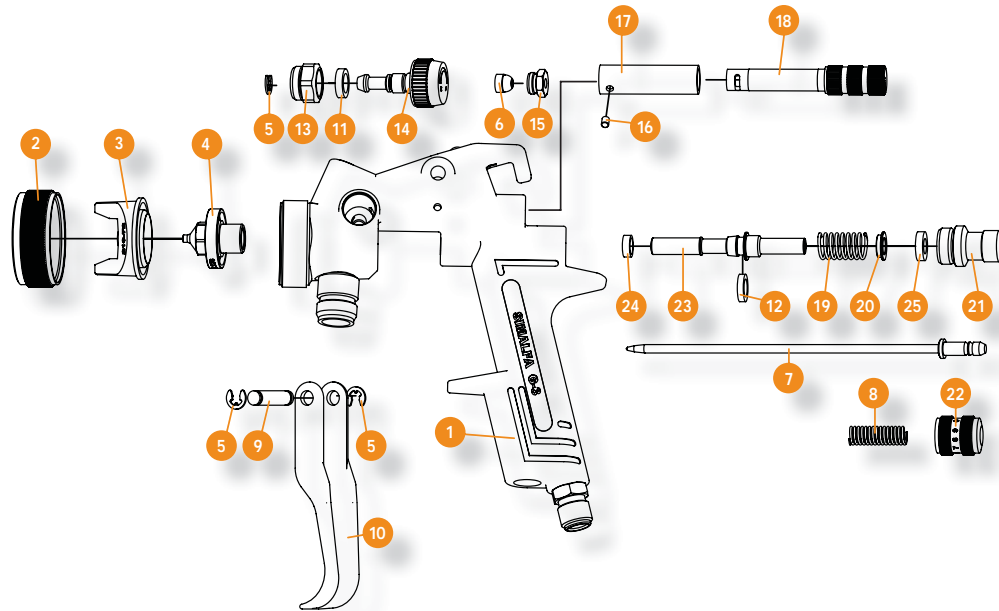
Tel: 973.423.9266

Fax: 973.423.9264

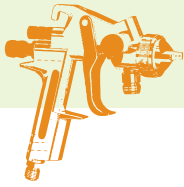
SIMALFA.COM



Parts Description + Pricing



Item	Part Number	Description	Price
1	2545574	Simalfa G3: HVLP - Spray Gun 2.0mm Ultra Yield (1.1lb/.504kg)	\$420.00
2	21000002	Simalfa G3: Air Cap Nut	\$24.50
3	21600320	Simalfa G3: Air Cap 2.0mm	\$56.00
4	21000420	Simalfa G3: Nozzle 2.0mm	\$58.75
5	61000007	Simalfa G3: Lock Clip	\$1.00
6	33500024	Simalfa G3: Packing Washer for Needle	\$4.95
7	21001320	Simalfa G3: Needle 2.0mm	\$22.00
8	21000015	Simalfa G3: Needle Spring	\$2.25
9	21000017	Simalfa G3: Trigger Pin	\$3.75
10	21000018	Simalfa G3: Trigger	\$22.75
11	075.11.1.0	Simalfa G3: Pattern Width Control Joint	\$4.50
12	21000020	Simalfa G3: Needle Air Cutoff Washer	\$2.50
13	065.11.1.0	Simalfa G3: Pattern Width Control Nut	\$4.75
14	066.14.1.0	Simalfa G3: Pattern Width Control Knob	\$7.50
15	28010011	Simalfa G3: Packing Washer Nut	\$4.50
16	603.01.1.0	Simalfa G3: Air Flow Shaft	\$3.50
17	053.01.1.0	Simalfa G3: Air Flow Joint	\$15.75
18	20500023	Simalfa G3: Air Flow Regulator	\$16.75
19	055.11.1.0	Simalfa G3: Needle Shaft Spring	\$2.50
20	151.11.1.0	Simalfa G3: Needle Joint (20)	\$2.75
21	060.11.1.0	Simalfa G3: Needle Raccord	\$7.75
22	024.13.1.0	Simalfa G3: Needle Knob	\$16.75
23	014.11.1.0	Simalfa G3: Needle Shaft	\$8.75
24	013.11.1.0	Simalfa G3: Needle Joint (24)	\$4.50
25	059.11.1.0	Simalfa G3: Needle Joint (25)	\$4.50



WARNING: Prior to any servicing and repair work the spray gun must be removed from atomizing air pressure and material inputs.

Procedures to always follow:

1. Always swap spray gun at spray station.
2. Always service spray gun immediately. The swapping and/or maintenance of a spray gun should take about 5 minutes. If maintenance is not immediate and adhesive is allowed to dry, expect servicing time of about 1 hour, not including the possible interruption in production if gun is not timely prepared.

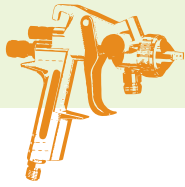
Things to avoid:

1. Never maintain spray guns while attached to fluid line. This will allow adhesive to flow into the air passageways of the spray gun body causing the compressed air to cure the adhesive, increasing the maintenance time drastically.
2. Never use any petroleum-based product (i.e. solvent, petroleum jelly, etc.) to clean or lubricate areas of spray gun where fluid may contact.
3. Never submerge spray gun in solvents or other cleaning fluids, as this will impair the functional reliability and efficiency of the gun. This will cause more service over time.

Servicing procedures:

1. Remove spray gun from spray system and replace with serviced spray gun.
2. Flush excess adhesive from spray gun using water.
3. Remove air cap, fluid nozzle and needle.
4. Flush gun body with water until thoroughly clean. Make sure adhesive does not get inside air passageways.
5. Clean all parts and remove any dried adhesive on these components and again flush thoroughly.
6. Place back together. If parts need replacement, do it now. We only want fully serviced and repaired guns to be placed into production.
7. Place in a convenient location for next use.





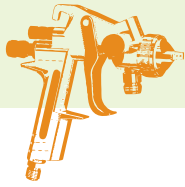
Trouble Shooting



WARNING: Prior to any servicing and repair work the spray gun must be removed from atomizing air pressure and material inputs.

SYMPTOM	CAUSE	REMEDY
Adhesive is dripping after trigger is released (Needle Drag)	Packing Washer for Needle (#6) is worn or damaged.	Clean and/or replace Packing Washer for Needle (#6)
	Packing Washer Nut (#15) is too tight.	Loosen slightly.
	Nozzle (#4) and/or Needle (#7) is damaged.	Replace.
	Foreign material in Nozzle (#4).	Remove Nozzle (#4) and clean.
Adhesive leaking at Packing Washer Nut (#15)	Packing Washer Nut (#15) not tight enough.	Tighten.
	Packing Washer for Needle (#6) is worn or damaged.	Clean and/or replace Packing Washer for Needle (#6)
Air leaking or blowing when in off-position	Needle Shaft Spring (#19) is broken.	Replace.
	Needle Shaft (#23) is stuck.	Lubricate or replace.
Spray pattern uneven	Air Cap (#3) hole soiled at side.	Remove and clean.





Accessories

Grouping	Part Number	Description	Price
Free Flowing System 5g/20kg	6581	Free Flowing 1/2" Hose for 20kg Box	\$45.00
	2545085	Simalfa: FF 20kg/5g Box Connector	\$15.00
	6571	Simalfa Stainless Steel Fluid Connector for Spray Gun	\$13.50
Free Flowing System 110g/440kg or 250g/1000kg	2545498	Simalfa: FF Camlock For 3" Valve - Male (Blue Valve)	\$37.00
	563690	Camlock: 2" Female X 90 Degree 2" with Barb	\$15.20
	2545052	PVC: 2" Hose Shank/Barb (M Thread 710hs)	\$4.64
	6553	PVC: 2" Ball Valve (Threaded)	\$40.80
	2545084	Simalfa: FF 2" PVC Reducer to 1/2 Barb	\$27.00
Cleaning Tools	2545063	Simalfa: Spray Gun Cleaning Kit (Contains: Twisted Brush 1/2", Twisted Brush 3/4", + Cleaning Probe)	\$15.00
	PBC40667	Twisted Brush 1/2"	\$3.60
	PBC33939	Twisted Brush 3/4"	\$3.60
	22576	Probe for Spray Gun Cleaning	\$9.00
Fluid Hose	6569	Fluid Hose: 1/2" PVC Braided	\$.90
	6554	Fluid Hose: 2" PVC	\$3.67
Clamps	6590	Clamp: 1/2" Hose	\$1.20
	6589	Clamp: 2" Hose	\$1.60
Air Hose + Components	2545749	Simalfa Air Hose w/connectors - 15 Feet	\$46.00
	2545750	Simalfa Air Hose w/connectors - 25 Feet	\$66.00
	2545751	Simalfa Air Hose w/connectors - 35 Feet	\$86.00
	7212-381	Air: Hose (3/8" Id Push On Type)	\$2.00
	1713	Air: Coupler for Air Hose (Push On Type)	\$12.00
Other	71-3	Air: Nipple for Air Hose (Push On Type)	\$3.50
	2545767	Teflon Tape 3/4"x520"	\$3.50
	2545281	Cable Ties - bag	\$12.50
	COM4409	Simalfa Jumbo Tap Valve (Red)	\$3.75

