

SIMALFA®

WATER BORNE ADHESIVES



TABLE OF CONTENTS

PARTS DESCRIPTION
+ PRICING

1

CLEANING + MAINTAINING

2

TROUBLE SHOOTING

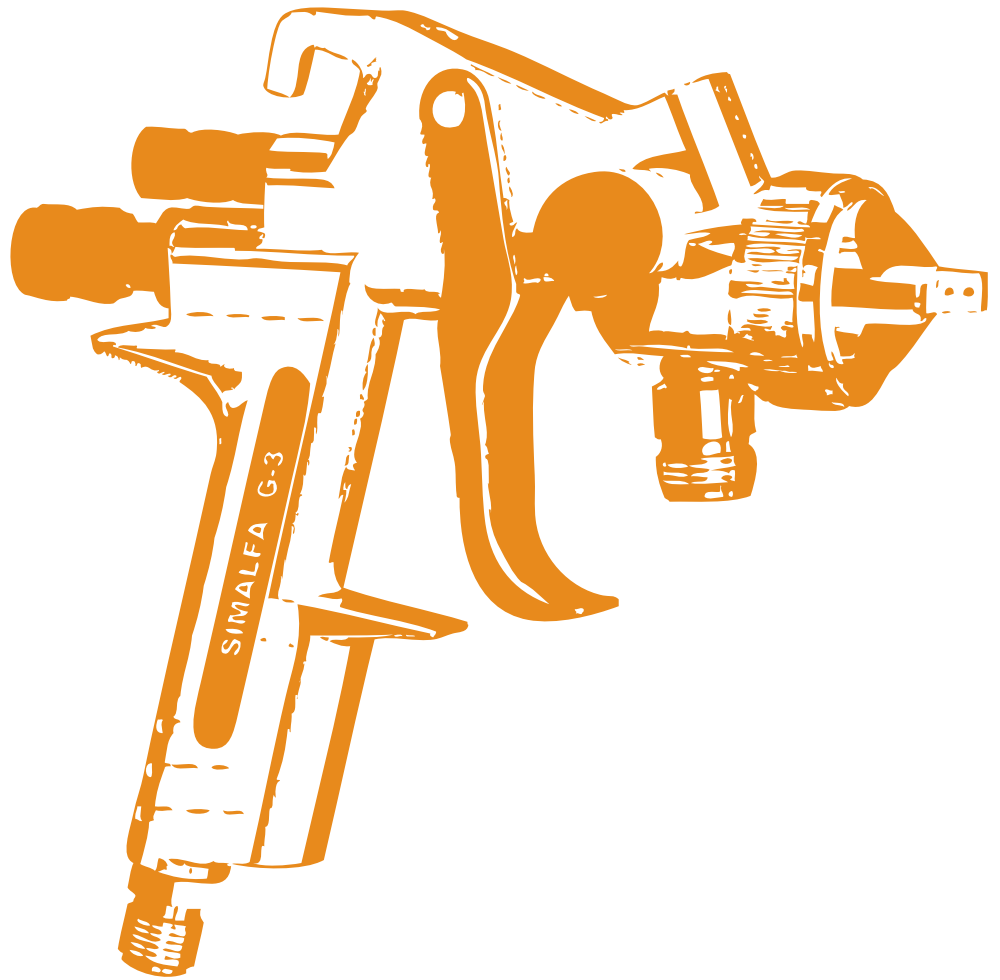
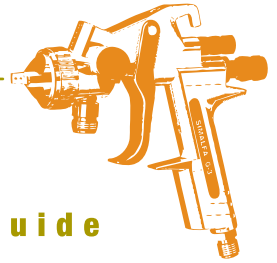
3

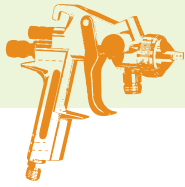
ACCESSORIES

4

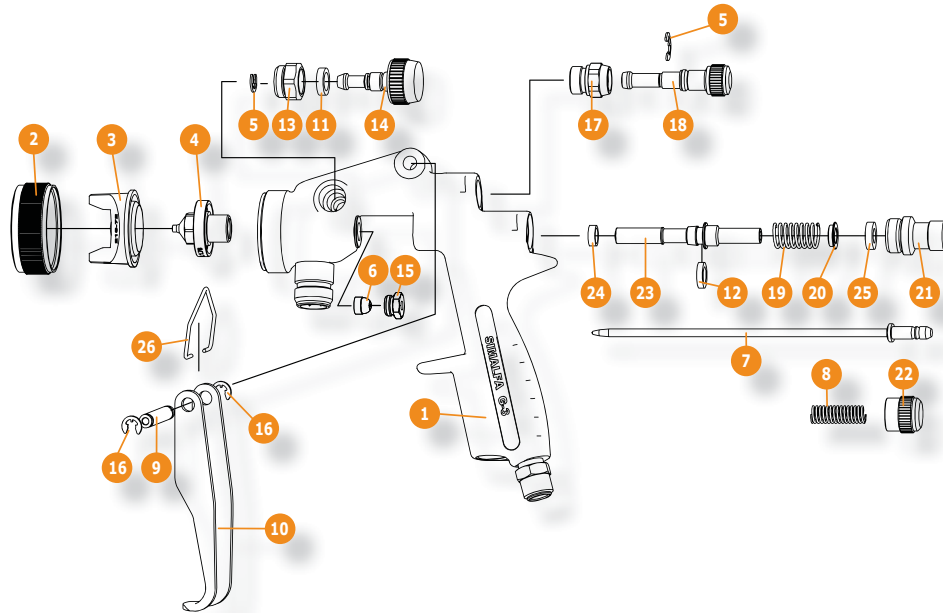
G3 HVLP

spray gun guide

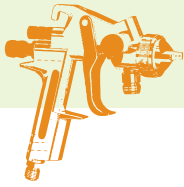




Parts Description + Pricing (v2)



Item	Part Number	Description	Price
1	S2100201	Simalfa G3: HVLP - Spray Gun 2.0mm Ultra Yield (1.1lb/.504kg)	\$420.00
2	20100002	Simalfa G3: Air Cap Nut (2)	\$24.50
3	21600320	Simalfa G3: Air Cap 2.0mm (3)	\$56.00
4	21000420	Simalfa G3: Nozzle 2.0mm (4)	\$58.75
5	0360010	Simalfa G3: Trigger Lock Clip # 5 (5)	\$1.00
6	33500024	Simalfa G3: Packing Washer for Needle (6)	\$4.95
7	21001320	Simalfa G3: Needle 2.0mm (7)	\$22.00
8	0231110	Simalfa G3: Needle Spring (8)	\$2.25
9	0351119	Simalfa G3: Trigger Pin (9) [v2 Only]	\$3.75
10	21000030	Simalfa G3: Trigger (10) [v2 Only]	\$22.50
11	0751110	Simalfa G3: Pattern Width Control Joint (11)	\$4.50
12	0451610	Simalfa G3: Needle Joint (12)	\$3.75
13	0651110	Simalfa G3: Pattern Width Control Nut (13)	\$4.75
14	0661410	Simalfa G3: Pattern Width Control Knob (14)	\$7.50
15	0211610	Simalfa G3: Packing Nut (15)	\$4.00
16	0720010	Simalfa G3: Lock Clip # 4 (16) [v2 only]	\$1.00
17	0651910	Simalfa G3: Air Flow Regulator Guide (17) [v2 Only]	\$24.00
18	6311710	Simalfa G3: Air Flow Regulator (18) [v2 Only]	\$24.00
19	0551110	Simalfa G3: Needle Shaft Spring (19)	\$2.50
20	1511110	Simalfa G3: Needle Joint (20)	\$2.75
21	0601910	Simalfa G3: Needle Raccord (21)	\$7.75
22	0241910	Simalfa G3: Needle Knob (22)	\$19.50
23	0141110	Simalfa G3: Needle Shaft (23)	\$8.75
24	0131110	Simalfa G3: Needle Joint (24)	\$4.50
25	0591110	Simalfa G3: Needle Joint (25)	\$4.50
26	21000099	Simalfa G3: Handle (26) [v2 Only]	\$4.00



WARNING: Prior to any servicing and repair work the spray gun must be removed from atomizing air pressure and material inputs.

Procedures to always follow:

1. Always swap spray gun at spray station.
2. Always service spray gun immediately. The swapping and/or maintenance of a spray gun should take about 5 minutes. If maintenance is not immediate and adhesive is allowed to dry, expect servicing time of about 1 hour, not including the possible interruption in production if gun is not timely prepared.

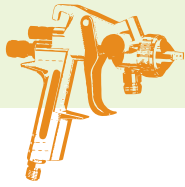
Things to avoid:

1. Never maintain spray guns while attached to fluid line. This will allow adhesive to flow into the air passageways of the spray gun body causing the compressed air to cure the adhesive, increasing the maintenance time drastically.
2. Never use any petroleum-based product (i.e. solvent, petroleum jelly, etc.) to clean or lubricate areas of spray gun where fluid may contact.
3. Never submerge spray gun in solvents or other cleaning fluids, as this will impair the functional reliability and efficiency of the gun. This will cause more service over time.

Servicing procedures:

1. Remove spray gun from spray system and replace with serviced spray gun.
2. Flush excess adhesive from spray gun using water.
3. Remove air cap, fluid nozzle and needle.
4. Flush gun body with water until thoroughly clean. Make sure adhesive does not get inside air passageways.
5. Clean all parts and remove any dried adhesive on these components and again flush thoroughly.
6. Place back together. If parts need replacement, do it now. We only want fully serviced and repaired guns to be placed into production.
7. Place in a convenient location for next use.





Trouble Shooting



WARNING: Prior to any servicing and repair work the spray gun must be removed from atomizing air pressure and material inputs.

SYMPTOM	CAUSE	REMEDY
Adhesive is dripping after trigger is released (Needle Drag)	Packing Washer for Needle (#6) is worn or damaged.	Clean and/or replace Packing Washer for Needle (#6)
	Packing Washer Nut (#15) is too tight.	Loosen slightly.
	Nozzle (#4) and/or Needle (#7) is damaged.	Replace.
	Foreign material in Nozzle (#4).	Remove Nozzle (#4) and clean.
Adhesive leaking at Packing Washer Nut (#15)	Packing Washer Nut (#15) not tight enough.	Tighten.
	Packing Washer for Needle (#6) is worn or damaged.	Clean and/or replace Packing Washer for Needle (#6)
Air leaking or blowing when in off-position	Needle Shaft Spring (#19) is broken.	Replace.
	Needle Shaft (#23) is stuck.	Lubricate or replace.
Spray pattern uneven	Air Cap (#3) hole soiled at side.	Remove and clean.

